

# Rediscover the wonder of sound



## Phonak Audéo™ Paradise

### There's nothing like the sound of Paradise

A Sonova brand

**PHONAK**  
life is on



Taking our  
best-selling  
hearing aid  
to the next level.

Welcome to  
Phonak Audéo  
Paradise.





# Phonak Audéo Paradise embodies leading technology based on trusted Phonak audiology and proven multifunctionality.

Technologies and features	Marvel	Paradise
Sound processing chip	Marvel sound processor	PRISM™ <b>new</b>
Connectivity multiprotocol chip	Sonova Wireless One Radio Digital 3.0	
Motion sensor		<b>new</b>
APD (Adaptive Phonak Digital)	•	2.0 <b>new</b>
AutoSense OS™	3.0	4.0 <b>new</b>
– Binaural VoiceStream Technology™	•	•
– Speech Enhancer		<b>new</b>
– Dynamic Noise Cancellation		<b>new</b>
– Motion Sensor Hearing		<b>new</b>
RogerDirect™	•	•
TV Connector	•	•
Direct connectivity with TV, iOS®, Android™ smartphones, hands-free calls	•	•
Direct Bluetooth® connectivity	•	Parallel with 2 devices <b>new</b>
Tap Control		<b>new</b>
myPhonak app	3.0	4.0 <b>new</b>
– Remote Support	•	AudiogramDirect <b>new</b>
– Remote Control	•	•
Hearing Screener	1.0	2.0 <b>new</b>
Phonak Target	6.0	7.0 <b>new</b>

iOS is a trademark of Cisco Technology, Inc.

Android is a trademark of Google LLC.

The Bluetooth® word mark and logos are registered trademarks owned by Bluetooth SIG, Inc., and any use of such marks by Sonova AG is under license.

# Phonak Audéo Paradise

## There's nothing like the sound of Paradise

At Phonak, we've identified what clients expect from a hearing aid. Ultimately, they want great sound quality, multifunctionality and the ability to control and personalize their hearing aid in any situation. Phonak Audéo Paradise delivers on these expectations to provide hearing aid wearers with **an unrivaled hearing experience**.

With a host of newly developed hardware and features working perfectly in sync, Paradise gives access to subtle layers and textures of sounds in numerous environments. Its multifunctional abilities allow for multiple Bluetooth-enabled devices to be connected, while the new Tap Control gives the wearer easy access to Bluetooth functionalities. Paradise is powered by proven lithium-ion rechargeable battery technology and provides a full day of listening including audio streaming.<sup>1</sup> Furthermore, Paradise gives hearing aid wearers control of their device with the upgraded myPhonak 4.0 app. This is a giant leap into the future and allows for remote screening and consultation from their hearing care professional.

With Phonak Audéo Paradise, we are elevating the hearing experience by providing technology that enables those with a hearing loss to be connected socially, thrive mentally and emotionally, which is fundamental for overall well-being.<sup>2</sup>

### Unrivaled sound quality

- New sound processing chip - PRISM
- New motion sensor
- New APD 2.0
- New AutoSense OS 4.0

### Personalized digital solutions

- New myPhonak 4.0 app
- New Hearing Screener 2.0

### Universal connectivity

- Connects to smartphones, TV and more
- Made for all
- Multiple Bluetooth connections
- New Tap Control for easy access to Bluetooth functionalities

<sup>1</sup> Expected battery life of 16 hours, including 8 hours of AutoSense™ OS listening paired with 4 hours of BT classic streaming and 4 hours of TV Connector streaming.

<sup>2</sup> Vercammen, C., Ferguson, M., Kramer, S.E., Meis, M., Singh, G., Timmer, B., Gagné, J-P., Goy, H., Hickson, L., Holube, I., Launer, S., Lemke, U., Naylor, G., Picou, E., Scherpiet, S., Weinstein, B., & Pelosi, A. (2020). Well-Hearing is Well-Being: A Phonak Position Statement. Hearing Review, 27(3):18-22. Accessed June 1, 2020.

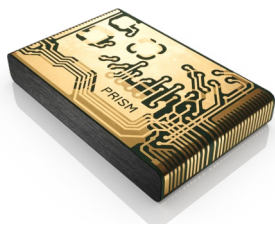




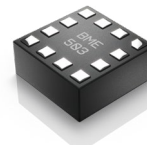
# Unrivaled sound quality

Phonak Audéo Paradise is made up of all new hardware, allowing it to excel in performance and host several elevated features. The result? A system that confirms our position as the one of the industry leaders in audiological excellence and sound quality.

## New Paradise hardware



**New sound processing chip PRISM**  
PRISM™ (Processing Real-time Intelligent Sound Management) new generation chip with double memory and more connectivity possibilities.

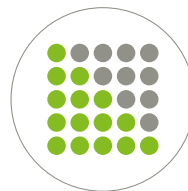


**New motion sensor**  
Ultra-low power motion tri-axial accelerometer that supports new hearing performance and ease-of-use features. The sensor delivers high performance functionality coupled with low power consumption.

## New Paradise processing & features



**New APD 2.0**  
Our proprietary fitting formula, APD 2.0, has a new processing algorithm and a new precalculation. It is designed to establish an ideal first fit with the benefit of reduced listening effort.<sup>3</sup>



**New AutoSense OS™ 4.0**  
Developed with artificial intelligence, AutoSense OS 4.0, is the perfect orchestration of features for the optimal personalized setting.

**New features**  
Speech Enhancer, Dynamic Noise Cancellation, Motion Sensor Hearing.

<sup>3</sup> Adaptive Phonak Digital 2.0 – Next-level fitting formula with adaptive compression for reduced listening effort, Phonak Field Study News, retrieved from [www.phonakpro.com/evidence](http://www.phonakpro.com/evidence), accessed August, 19, 2020





## New APD 2.0

Phonak Audéo Paradise is a true wonder of sound. When creating our latest hearing solution, we turned to nature for inspiration. Hearing is such an integral part of our existence and fundamental for our overall well-being. Nature is also the source of so many sounds that can soothe, relax and comfort us. What better way to re-discover sound than with a hearing aid inspired by nature itself – Phonak Audéo Paradise.



### Challenge

Sensorineural hearing-impaired listeners typically experience reduced dynamic range in sounds and loss of spatial awareness. This poses a challenge for hearing aid fitting: how to deliver an individualized situation-specific fitting to compensate for the hearing loss of clients.

### Solution

APD 2.0, our proprietary fitting formula, is designed to balance audibility, loudness and sound quality<sup>2</sup>. It does this by introducing a new processing algorithm and a new precalculation for a spontaneous first fit acceptance.

### Benefit

The ultimate goal of hearing loss compensation is to enable clients to socially connect and enjoy all the sounds around them. From soft to loud sounds, APD 2.0 is designed to provide clients with a naturalness of sound, such as:

- reduction of perceived reverberation<sup>4</sup>
- reduced listening effort in noise<sup>5</sup>
- spontaneous first fit acceptance for mild to moderate hearing loss<sup>6</sup>

<sup>4</sup> Hassager, H. G., Wiinberg, A., & Dau, T. (2017a). "Effects of hearing-aid dynamic range compression on spatial perception in a reverberant environment." J. Acoust. Soc. Am. 141, 2556-2568.

<sup>5</sup> Wright, A. (2020). Adaptive Phonak Digital 2.0 – Next-level fitting formula with adaptive compression for reduced listening effort. Phonak Field Study News, retrieved from [www.phonakpro.com/evidence](http://www.phonakpro.com/evidence), accessed August 19th, 2020.

<sup>6</sup> Senn, M. (2020). An analysis of - fine-tuning applied at first fit. Phonak Target Fitting Data. Unpublished data. Contact [claims@phonak.com](mailto:claims@phonak.com) if you are interested in further information.

## New AutoSense OS 4.0

### Orchestrating unrivaled sound quality

Developed with artificial intelligence, the new AutoSense OS 4.0 is a perfect orchestration of features to personalize and create an unrivaled sound quality. AutoSense OS 4.0 perfectly blends our existing hearing performance features in combination with our new features, to support the variety of end user communication needs and lifestyle. Thus supporting the well-being of our clients.



### New Speech Enhancer

Speech Enhancer is designed to enhance the peaks of speech in quiet situations.

### New Dynamic Noise Cancellation

A newly designed spatial noise cancellation feature that works in combination with a directional beamformer to improve the Signal-to-Noise ratio in challenging situations.

### New Motion Sensor Hearing

Steering of the directional beamformer and Dynamic Noise Cancellation feature based on the movement of the end user.



## New Speech Enhancer for quiet environments

### Challenge

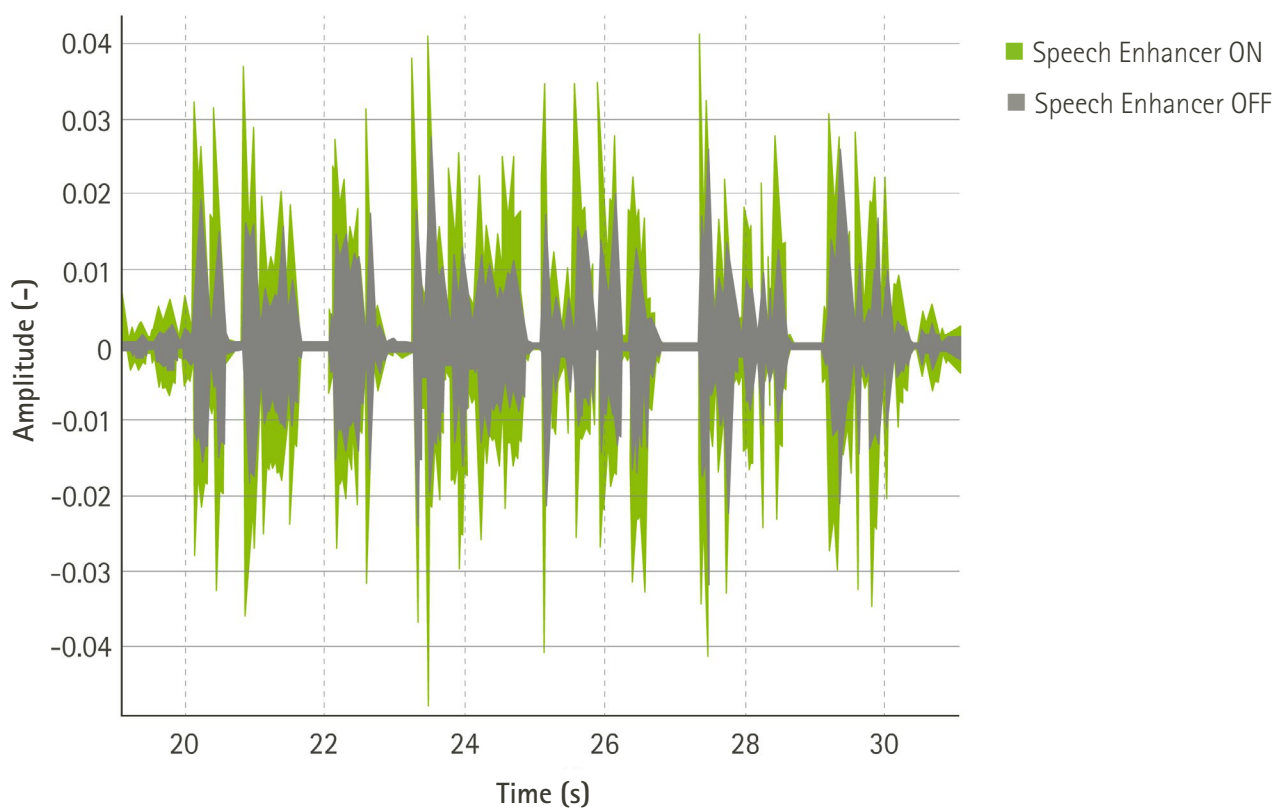
Having to repeat a sentence does not only occur when background noise is present. Self-reported difficulty listening in quiet situations is a strong predictor in hearing aid acquisition and benefit.<sup>7</sup> Being able to hear friends and family in quiet situations is as important as taking part in social gatherings. How do we increase the audibility of soft speech so it is easier to hear?



## Solution

Speech Enhancer is an adaptive feature that is designed to enhance the peaks of a speech signal in quiet situations.

## Evidence



Speech waveform showing Speech Enhancer on (green) compared to off (gray)

<sup>7</sup> Dillon, H., Hickson, L., & Seeto, M. (2018). Hearing aids: What audiologists and ENTs should know. Keynote address: World Congress of Audiology. Cape Town, SA.



## New Dynamic Noise Cancellation for challenging situations

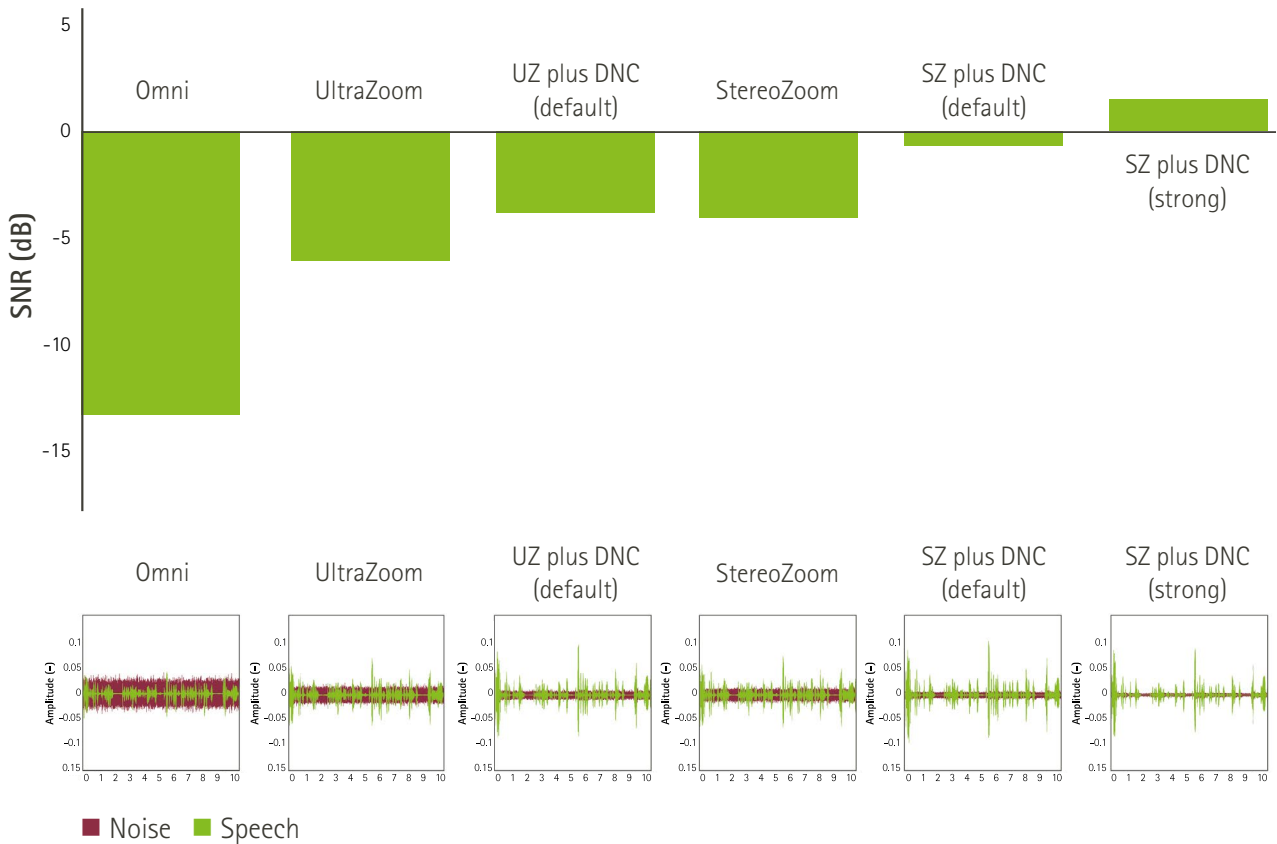
### Challenge

Being able to fully participate in family and social gatherings plays an integral part of our quality of life and overall well-being. Although these events are usually filled with joy, they can pose a challenge for those with a hearing loss, often resulting in fatigue and frustration. The goal of a hearing aid in these challenging situations is to provide a comfortable balance between audibility of speech and comfort.



## Solution

Dynamic Noise Cancellation is a spatial noise cancellation system that works in combination with a directional beamformer. Dynamic Noise Cancellation is designed specifically for those challenging social situations where the end user would like to converse with family and friends but there is background noise.



Signal-to-noise ratio and speech waveforms showing the combined effect of various beamforming settings and Dynamic Noise Cancellation (DNC) strengths.

## New Motion Sensor Hearing for listening situations on the go

### Challenge

Having a conversation with someone especially while walking can be challenging. Even more so in a noisy environment. The challenge is to design a hearing aid that can smoothly adapt its features according to the sound environment the end user is standing or walking in.

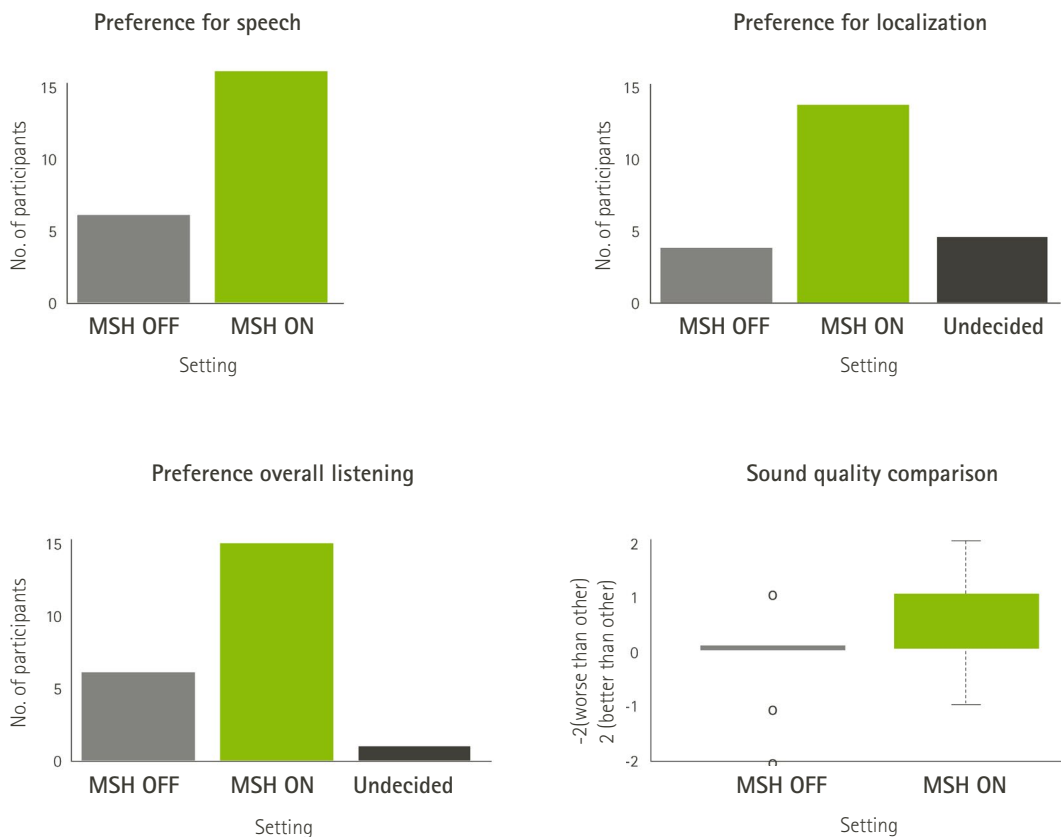


## Solution

The Motion Sensor Hearing feature works together with AutoSense OS 4.0 to detect if the end user is stationary or moving, plus how noisy the surroundings are. Once the activity and noise level is determined, it seamlessly steers the microphone mode and Dynamic Noise Cancellation settings.

## Evidence

- Higher preference rating with speech perception, localization and sound quality<sup>8</sup>
- Higher preference rating overall<sup>8</sup>



Preference results for tasks related to speech and localization as well as for overall listening and sound quality preference results. Out of 22 participants, 16 preferred Motion Sensor Hearing (MSH) for speech, 14 preferred MSH for localization and 15 preferred MSH for overall listening.

<sup>8</sup> Appleton, J., & Voss, S. C. (2020). Motion-based beamformer steering leads to better speech understanding and overall listening experience. Phonak Field Study News in preparation. Expected end of 2020.

# Personalized digital solutions

Phonak has developed empowering smart apps to unleash the full potential of Paradise. These powerful apps provide access to features that allow a personalized customer experience.

## New myPhonak 4.0 app

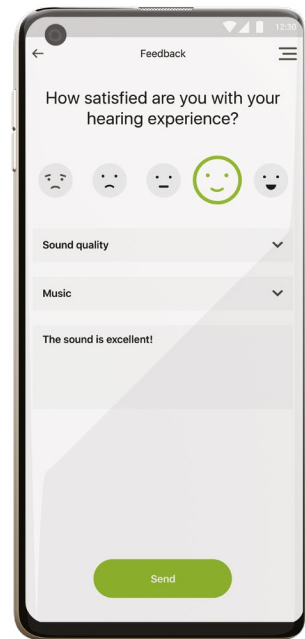
Besides the existing personalization features such as Remote Support<sup>9</sup> and Remote Control, myPhonak 4.0 will offer a new Hearing Screener 2.0.

## New Phonak Hearing Screener 2.0

An online hearing test that can be integrated into any hearing care professional website. This Phonak Hearing Screener 2.0 provides the hearing care professional the ability to obtain an audiogram without physically seeing the client. The new version offers additional features for lead generation and marketing campaigns as well as a more detailed report.

## New AudiogramDirect for Remote Support

Phonak Remote Support with AudiogramDirect offers the world's first in situ audiometry, directly via Phonak Paradise with any iOS or Android smartphone. AudiogramDirect can be used as part of the fitting process to test clients' hearing directly through their hearing aids. Designed to be used during a follow-up session but can now also provide a starting point for a new first remote fitting.



To find out more please read through the dedicated personalized digital solutions brochure or visit [www.phonakpro.com/eSolutions](http://www.phonakpro.com/eSolutions)

<sup>9</sup> Available in selected markets, for further information go to [www.phonakpro.com/eSolutions](http://www.phonakpro.com/eSolutions)









# Universal connectivity

Phonak Audéo Paradise is equipped for universal connectivity. It provides direct connectivity to iOS and Android smartphones, TVs, Roger devices and wireless accessories. This allows for a spectrum of possibilities for hearing aid wearers as compatibility is practically limitless.

## Multiple Bluetooth connections

The multifunctional capabilities of Paradise allow for up to eight Bluetooth-enabled devices to be paired, while two can be simultaneously connected. In today's virtually connected world, tech savvy hearing aid wearers can now switch effortlessly between two active Bluetooth devices.

## Challenge

Being connected to just one Bluetooth-enabled device limits hearing aid wearers to just one source of audio input. This is less than optimal in today's digital world.

## Solution

Multiple Bluetooth device connectivity and the ability to alternate between the two, allows for more convenience.

## Benefit

Two Bluetooth connections allow a seamless switch from one device to another and adds to a seamless listening experience.



## New Tap Control for easy access to Bluetooth-enabled functionalities

### Challenge

In a world with increasing connectivity options, hearing aid wearers are having to control more functions on their hearing aids. Consumer needs research has shown that end users expect that their hearing aids are easy to use.<sup>10</sup>

### Solution

With a motion-sensor-based hearing aid it makes it possible to steer Bluetooth features via a double tap on the pinna. It allows the wearer to accept/end calls from connected iOS/Android smartphones; pause/resume streaming from connected Bluetooth devices and access to Bluetooth-based voice assistant apps.

### Benefit

Tap Control gives the wearer easy, reliable access to Bluetooth functionalities.

<sup>10</sup>Kochkin, Sergei MarkeTrak VII: Obstacles to adult non-user adoption of hearing aids. The Hearing Journal, 60(4), 24-51.







# A piece of Paradise for every client

Phonak Audéo Paradise is available in four form factors and seven housing colours ranging from Sand Beige to Velvet Black.



## Housing colours



## Groundbreaking built-in lithium-ion rechargeable technology

Phonak has pioneered rechargeability in the hearing industry with the introduction of lithium-ion rechargeable batteries. The batteries are engineered to last six years. Your clients can enjoy a full day of hearing including streaming.<sup>11</sup> Rechargeable hearing aids come with easy-to-use charging options:



**Phonak Charger Case Combi**  
The Phonak Charger Case Combi is a charger and protective hard case in one.



**Phonak Power Pack**  
For charging rechargeable hearing aids on the go, the Phonak Power Pack can be easily attached to the bottom of the Phonak Charger Case Combi.



**Phonak Mini Charger Case**  
The Phonak Mini Charger Case, with standard USB-C charging outlet, is a compact charger for two hearing aids.

## Even more sound quality

### Roger™

Paradise hearing aids feature RogerDirect™ which allows the Roger technology to stream directly to Audéo P hearing aids without having to attach an external receiver.<sup>12</sup> This major innovation makes Roger technology easier to use and more attractive for a broader group ranging from mild to profound hearing loss.

### Phonak TV Connector

The TV Connector is an easy-to-set-up and easy-to-use device that can be used with Paradise hearing aids for excellent streamed sound quality.



<sup>11</sup> Expected battery life of 16 hours, including 8 hours of AutoSense™ OS listening paired with 4 hours of BT classic streaming and 4 hours of TV Connector streaming .

<sup>12</sup> RogerDirect™ requires the installation of Roger receivers into the Phonak hearing aids.

Take the first step  
to help your clients  
to connect socially,  
thrive mentally and  
emotionally with  
Phonak Paradise.

## Phonak Well-Hearing is Well-Being™

Hearing well goes beyond the ability to simply hear sounds clearly. It's linked to a greater state of social-emotional, cognitive and physical well-being. This bigger picture, with taking action to treat hearing loss as a catalyst for well-being, is what we refer to as **"Well-Hearing is Well-Being"**.



### Social-emotional well-being

Hearing well fosters easier engagement, stronger connections and a more positive outlook.



### Cognitive well-being

Hearing well supports cognitive fitness.<sup>13</sup>



### Physical well-being

Hearing well enables people to live a more active and healthy lifestyle.



Visit [phonakpro.com/well-hearing](https://phonakpro.com/well-hearing) to implement Well-Hearing is Well-Being into your daily practice.

The content of this page, unless specified otherwise, is based on:

Vercammen, C., Ferguson, M., Kramer, S. E., Meis, M., Singh, G., Timmer, B., Gagné, J.-P., Goy, H., Hickson, L., Holube, I., Launer, S., Lemke, U., Naylor, G., Picou, E., Scherpiet, S., Weinstein, B., & Pelosi, A. (2020). Well-Hearing is Well-Being: A Phonak Position Statement. *Hearing Review*, 27(3):18-22. Accessed June 1, 2020.

<sup>13</sup> Karawani, H., Jenkins, K., & Anderson, S. (2018). Restoration of sensory input may improve cognitive and neural function. *Neuropsychologia*, 114, 203-213. <https://doi.org/10.1016/j.neuropsychologia.2018.04.041>

# life is on

At Phonak, we believe that well-hearing equates to well-being and is essential to living life to the fullest. For more than 70 years, we have remained passionate about creating a world where 'life is on' for everyone. Our innovative hearing solutions are designed for people of all ages and all degrees of hearing loss, to connect socially, thrive mentally and emotionally.

[www.phonakpro.com](http://www.phonakpro.com)



028-2152-02/V2.00/2020-08/ha © 2020 Sonova AG All rights reserved